

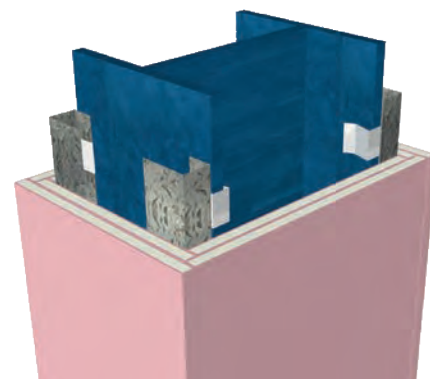
KSFP1-KSFP9

STRUCTURAL FRAME: Steel column or beam encased in either **FireShield** or **ShaftLiner**

PLASTERBOARD FRAME: [Option 1] Furring channel track with Encasement Clips at 600mm max centres friction fitted to structural frame flanges
[Option 2] Plasterboard directly fixed to structural steel

[13mm **FireShield** can be substituted with 13mm **TruRock**]

[16mm **FireShield** can be substituted with 16mm **TruRock**]



FRL	System	Plasterboard Lining	Plasterboard Thickness (mm)
30/-/- Fire Report FAR 2519	KSFP1	1 layer of 13mm FireShield	13
60/-/- Fire Report FAR 1613	KSFP2	1 layer of 16mm FireShield	16
60/-/- Fire Report FAR 3124	KSFP3	2 layers of 13mm FireShield	26
60/-/- Fire Report FAR 3124	KSFP4	1 layer of 25mm ShaftLiner	25
90/-/- Fire Report FAR 1613	KSFP5	2 layers of 16mm FireShield	32
120/-/- Fire Report FAR 1613	KSFP6	3 layers of 13mm FireShield	39
120/-/- Fire Report FAR 3124	KSFP7	1 layer of 13mm FireShield plus 1 layer of 25mm ShaftLiner	38
180/-/- Fire Report FAR 1613	KSFP8*	4 layers of 16mm FireShield	64
180/-/- Fire Report FAR 3124	KSFP9*	1 layer of 13mm FireShield plus 2 layers of 25mm ShaftLiner	63

* KSFP8 and KSFP9 can be installed as walls or bulkheads up to 1200mm wide with an FRL of 180/180/180. Fire Report FAR 4522.

KSFP10-KSFP16

STRUCTURAL FRAME: Timber column or beam (minimum dimension 92mm x 92mm) encased in either **FireShield** or **ShaftLiner**

[13mm **FireShield** can be substituted with 13mm **TruRock**]

[16mm **FireShield** can be substituted with 16mm **TruRock**]



FRL	System	Plasterboard Lining	Plasterboard Thickness (mm)
30/-/- Fire Report FAR 1718	KSFP10	1 layer of 13mm FireShield	13
60/-/- Fire Report FAR 1718	KSFP11	2 layers of 13mm FireShield	26
60/-/- Fire Report FAR 3124	KSFP12	1 layer of 25mm ShaftLiner	25
90/-/- Fire Report FAR 1718	KSFP13	3 layers of 13mm FireShield	39
90/-/- Fire Report FAR 3124	KSFP14	1 layer of 13mm FireShield plus 1 layer of 25mm ShaftLiner	38
120/-/- Fire Report FAR 1718	KSFP15	3 layers of 16mm FireShield	48
180/-/- Fire Report FAR 1718	KSFP16	4 layers of 16mm FireShield	64